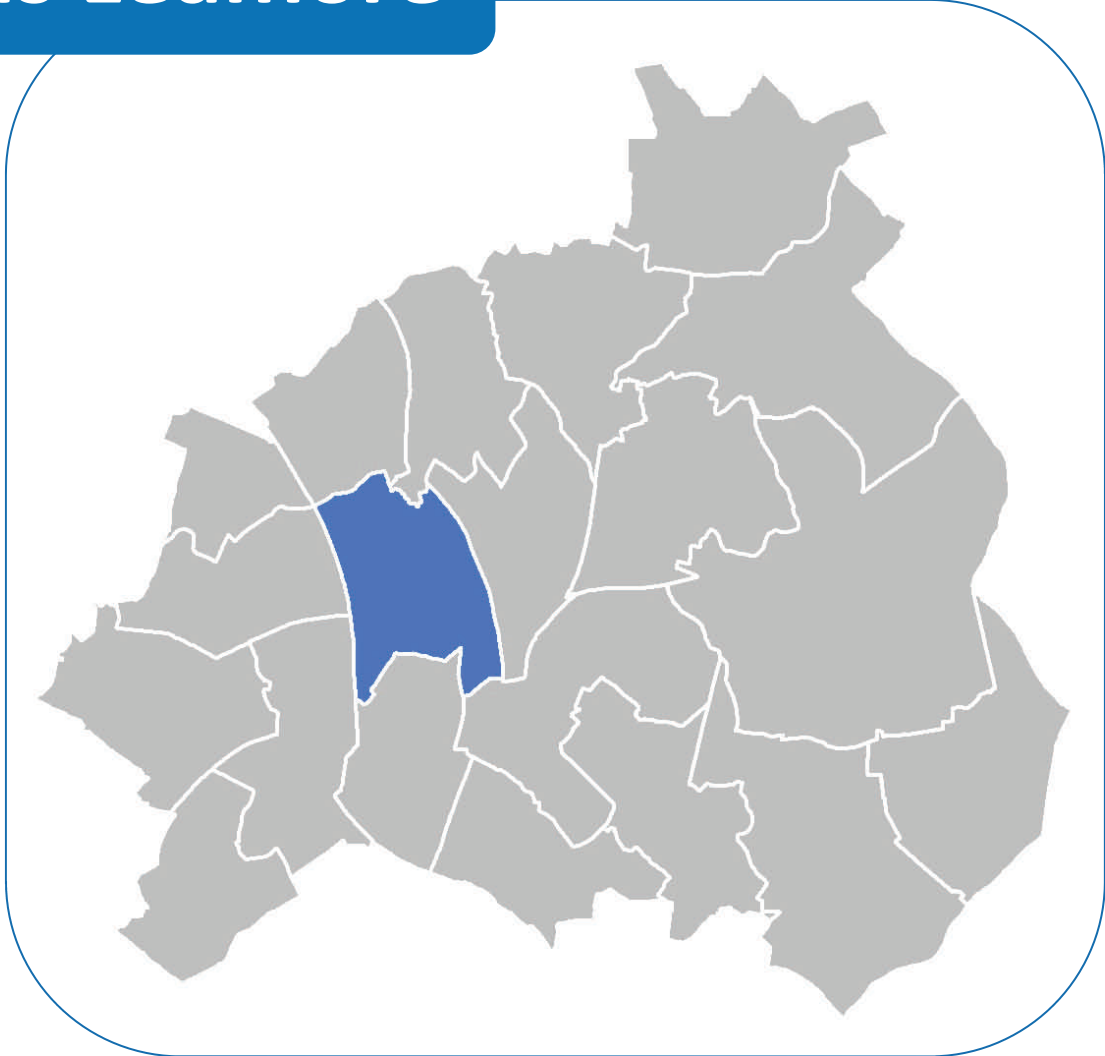




WALSALL WARD PROFILES

Birchills Leamore



All mapping in this profile is © Crown copyright and database rights 2011 Ordnance Survey 100019529

Data provided by Walsall Analysts' Group

Prepared by Liz Connolly, Strategic Regeneration
Walsall Council, Civic Centre, Darwall Street, Walsall WS1 1TP
Tel: 01922 652553 Email: connollye@walsall.gov.uk

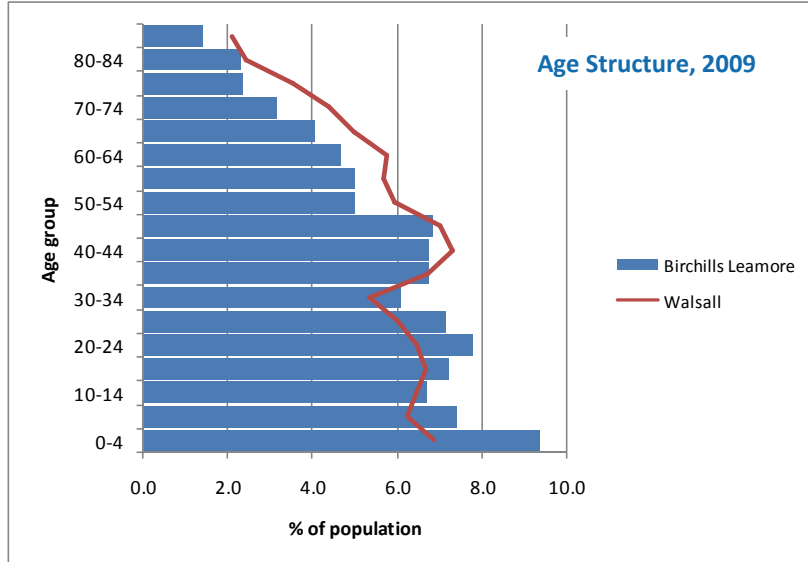


Within: North Walsall Area Partnership

Where: 64.0% of residents are satisfied with their local area as a place to live (Walsall = 71.4%)
 55.1% agree people from different backgrounds get on well together in their area (Walsall = 70.9%)
 24.2% agree they can influence decisions in their local area (Walsall = 22.7%)

Source: Place Survey, 2008

Population:



Source: ONS, mid-year estimates 2009

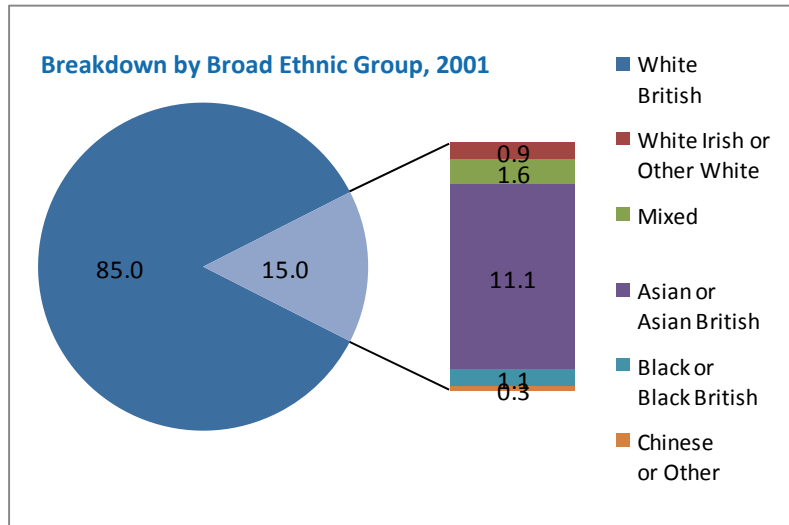
Area:

- 4.59 sq km
- 4.43% of Walsall borough

Age Group	Number	% Ward	% Walsall
All ages	13,869	100.0	100.0
0-4	1,298	9.4	6.9
5-9	1,025	7.4	6.2
10-14	930	6.7	6.5
15-19	1,002	7.2	6.7
20-24	1,078	7.8	6.5
25-29	989	7.1	6.0
30-34	843	6.1	5.4
35-39	937	6.8	6.7
40-44	937	6.8	7.3
45-49	948	6.8	7.0
50-54	692	5.0	6.0
55-59	696	5.0	5.7
60-64	648	4.7	5.8
65-69	561	4.0	5.0
70-74	439	3.2	4.4
75-79	327	2.4	3.5
80-84	321	2.3	2.4
85+	198	1.4	2.1

Source: ONS, mid-year estimates 2009

Ethnicity:



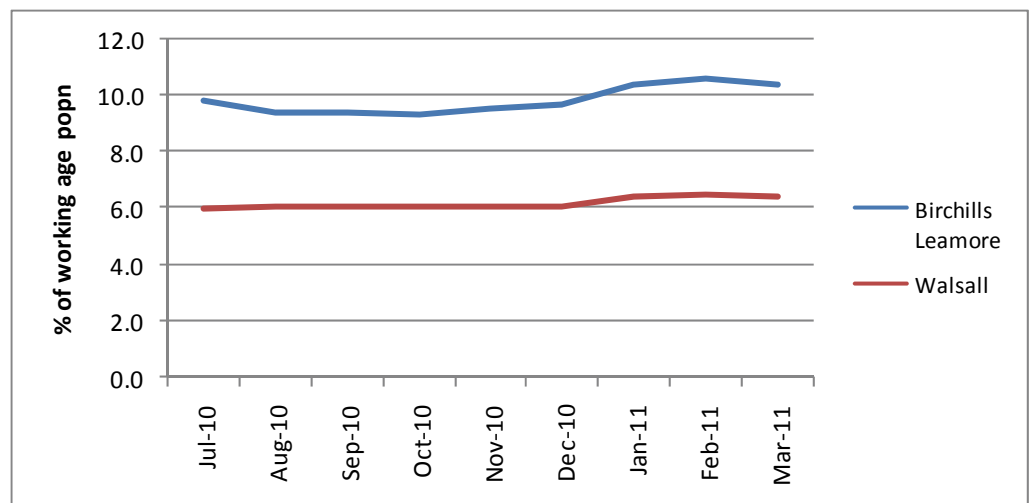
Source: ONS, Census 2001

Unemployment:

JSA Claimant Count

Jobseekers' Allowance claimants as a percentage of the total working age resident population (aged 16-64).

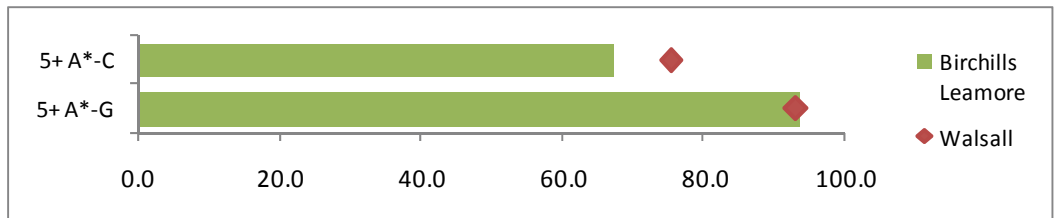
Source: Claimant Count: ONS, Population: ONS mid-year estimates 2007



Education:

GCSE Performance, 2010

Chart (right) shows the percentage of GCSE candidates achieving 5 or more grades A*-C and A*-G.

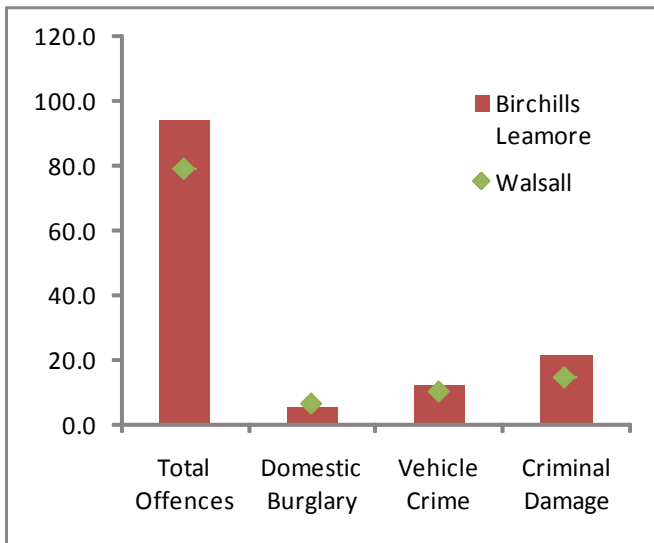


Source: Walsall Children's Services—Serco, 2011

Crime:

Crime Rates, 2010/11

Chart (below) shows number of recorded crimes per 1,000 residents.



Source: West Midlands Police, 2011

Health:

Life Expectancy, 2004-2008

Table (below) shows average life expectancy at birth, in years

	All persons	Males	Females
Walsall	79.3	76.8	81.8
Ward	78.9	74.8	83.2

Source: NHS Walsall, 2011

Fire:

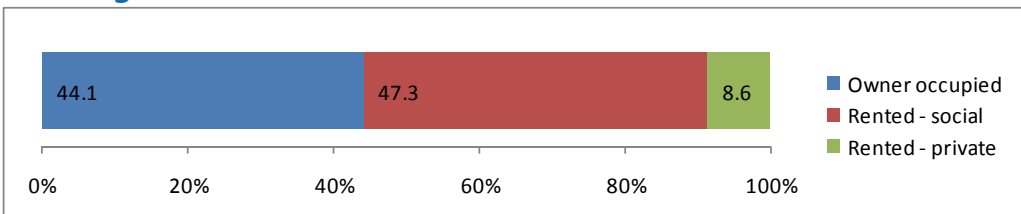
Fire Incidents, 2010/11

Table (below) shows number of incidents per 1,000 residents.

	Accidental dwelling fire	Arson: dwelling	Arson: non-domestic	Arson: vehicle
Walsall	0.57	0.14	0.09	0.40
Ward	0.81	0.30	0.07	0.59

Source: West Midlands Fire Service, 2011

Housing:



Tenure, 2001

Chart (left) shows percentage of households in the area by tenure.

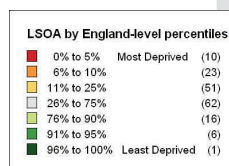
Source: ONS, Census 2001

Deprivation:

The Index of Multiple Deprivation (IMD) 2010 combines 7 different elements of deprivation at neighbourhood level (or lower layer super output areas—LSOAs).

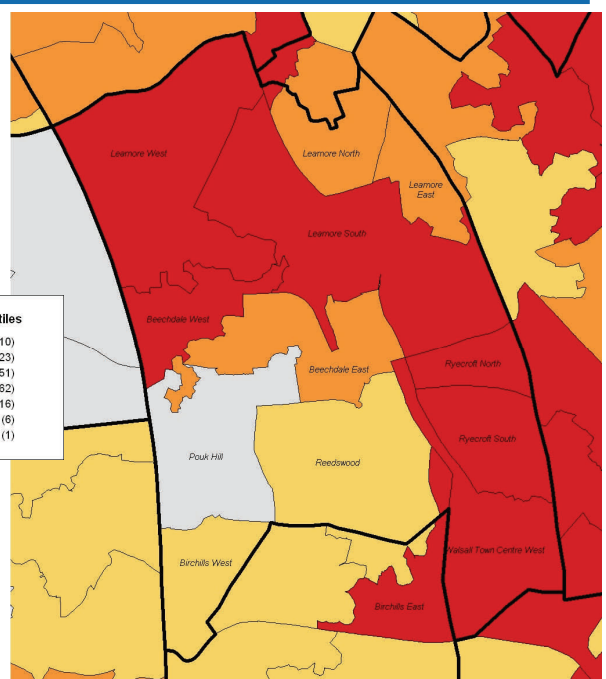
Map (right) shows variations in deprivation across the ward. The score for the ward given below is a population-weighted average of all its neighbourhoods.

	Average Score	Rank (1=most deprived)
Walsall	31.23	30/326 Local Authorities
Ward	51.70	2/20 Walsall Wards



Walsall is the 30th most deprived local authority district out of 326 in England. The ward is much more deprived than the borough overall, with an estimated score that makes it the 2nd most deprived ward out of 20 in Walsall.

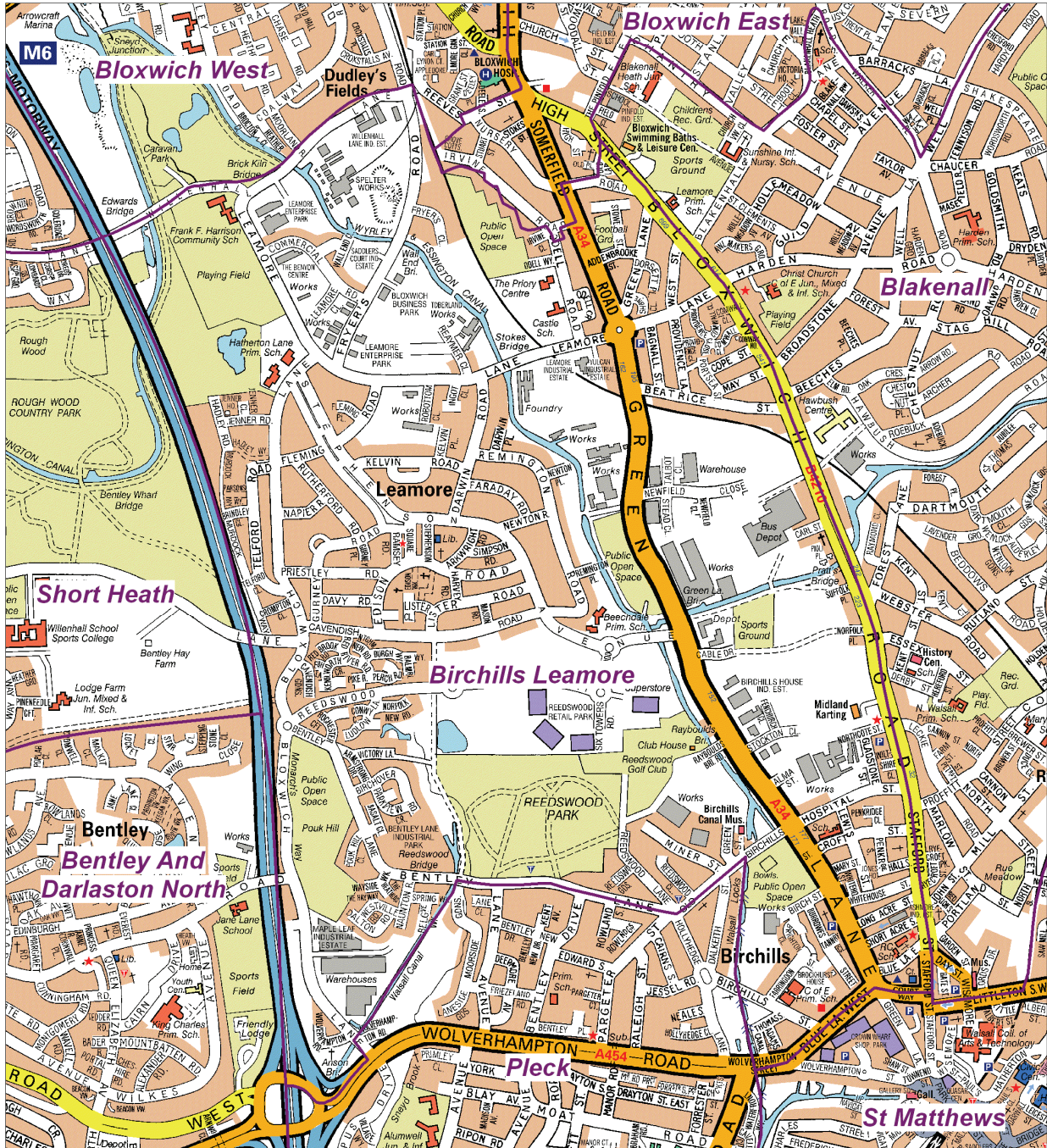
Source: Dept Communities & Local Government 2011





Walsall Council

Birchills Leamore Ward Boundary



Reproduced by permission of Geographers' A-Z Map Co.Ltd. Licence No. B3934.
© Crown Copyright 2007. All rights reserved. Licence number 100017302.

NO FURTHER COPIES MAY BE MADE.

